



SALE | 38608

## Field - Pissouri, Limassol

Pissouri, Limassol

€652,000 Not subject to VAT

### Description

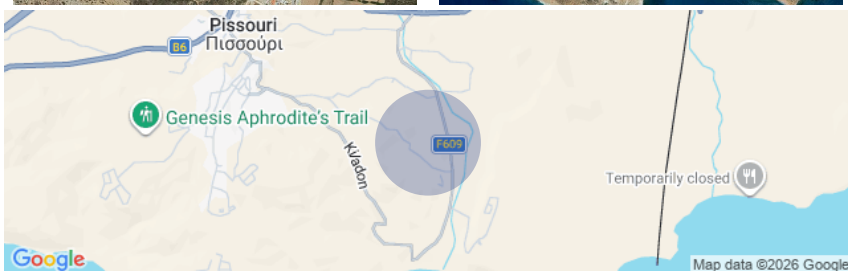
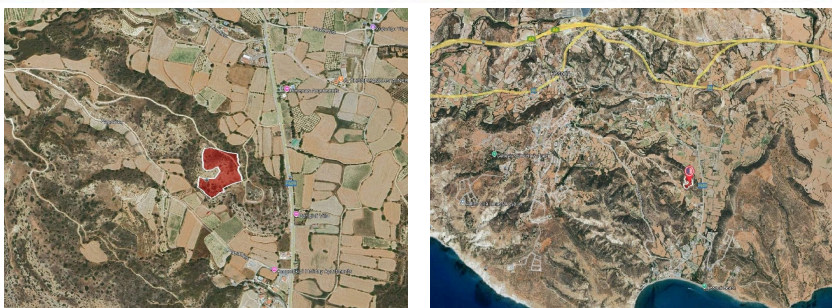
Tourist field in the Pachna community, Limassol district. It is located approximately 2.7 km southeast of the center of the community and approximately 1.5 km north of the beach. Tourist field in the Pachna community, Limassol district. It is located approximately 2.7 km southeast of the center of the community and approximately 1.5 km north of the beach. It has an irregular shape with a sloping ground surface and is accessible via a path. The property falls within the T4 Tourist Zone with a building coefficient of 20%.



**Zone**  
Tourist



**Land Area**  
18730 m<sup>2</sup>



\*Showing approximate location

**Nicosia Office**  
29, Gerasimou Markora, Office 001  
1075, Nicosia

[www.cyprusproperties.com.cy](http://www.cyprusproperties.com.cy)  
[notifications@cyprusproperties.com.cy](mailto:notifications@cyprusproperties.com.cy)

