



RENT | 41005

Four-Bedroom Detached House in Mesa Gitonia - Panthea, Limassol

Mesa Gitonia - Panthea, Limassol

€4,700 /Monthly Not subject to VAT

Description

Located in family residential area of Panthea in Limassol, walking distance to Grammar School.

GROUND FLOOR

- Bright and spacious living room with two seating areas and a home cinema system, ideal for family time or entertaining guests
- Elegant dining area with full furniture set



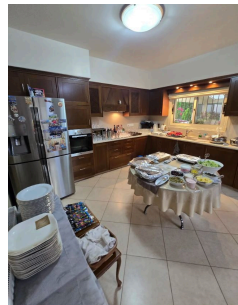
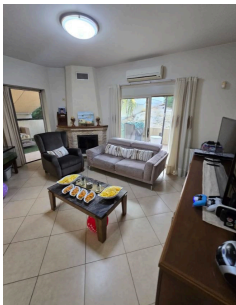
Covered Area
235 m²







Bathrooms
2

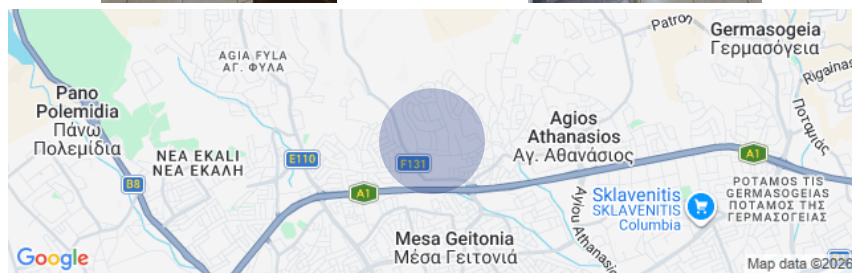


Bedrooms
4



Property Details

	Plot area:	235 m ²
	Furnished:	Fully furnished
	Status:	Used
	Year of construction:	2006
	Toilets:	3



*Showing approximate location

Larnaca Office
9 Grigori Afxentiou Avenue
6023, Larnaca

www.cyprusproperties.com.cy
notifications@cyprusproperties.com.cy



All information provided by the listing agent is deemed reliable but is not guaranteed and should be independently verified. No warranties or representations are made of any kind.